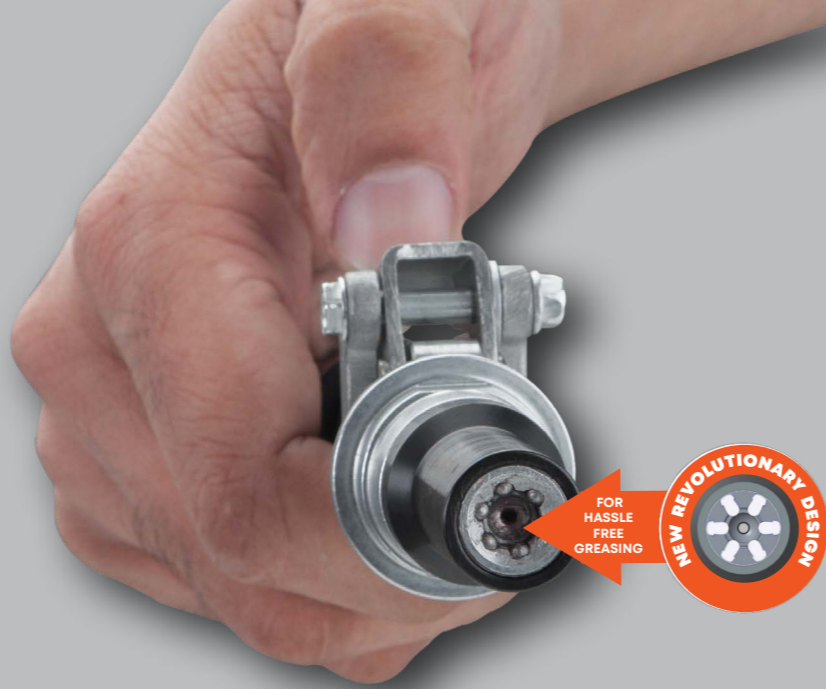


HC21

QUICK LOCK GREASE COUPLERS

Quick disconnect coupler for convenient, hands free operation



Disengaging a coupler from a grease fitting, under pressurised conditions is very difficult & often leads to broken fittings or damage to the coupler jaws

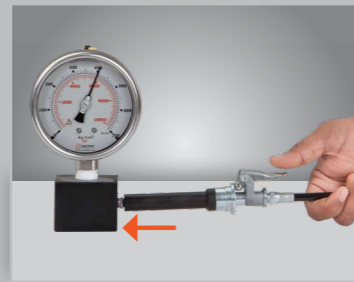
The **GROZ Quick Lock Grease Couplers** take away this worry with their unique 6 point contact design. Designed for quick & convenient dis-engagement of coupler from grease / zerk fittings under pressure

The engagement system moves inside the steel wall when the thumb lever is actuated. This provides additional back support to the mechanism in high pressure applications

Robust Construction

1-1/2" times stronger coupler body is heat treated to withstand high pressures without deformation

Case hardened rollers hold the coupler in position when subjected to high pressure applications



Convenient Engagement
Press thumb lever & slide the coupler onto the fitting, 6 hardened cylindrical pins hold the grease/zerk fitting tight



Easy Release
Press the thumb lever to disconnect coupler from the zerk fitting

QUICK COMPARISON

GROZ QUICK LOCK

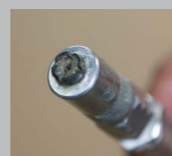


Engagement at 6 points
Hardened ball points of contact will not get deformed giving longer life
Slim line design provides easy access into tight areas
Easy to service/repair

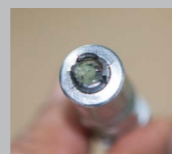
OTHER QUICK COUPLERS



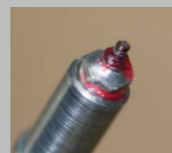
Provide engagement around the flat surfaces
Upon repeated use, at varying pressures jaws tend to deform, loosening grip over the fitting
Very difficult to service/repair



NO MORE MESS



NO MORE BROKEN JAWS



NO MORE BROKEN GREASE FITTINGS

QUICK LOCK - REGULAR



QUICK LOCK - EXTRA LONG

- Useful for greasing deep & recessed grease fittings with limited reach
- Especially useful in harvesters, U-joints, PTO shafts, axles etc.



QUICK LOCK ADVANTAGE

- Convenient Engagement & Dis-engagement**
- Easy Release**
- Hands free operation**
Once engaged the coupler sits firm on the grease / zerk fitting & does not require to be held, as is required with regular couplers. This coupler will not move, thus allowing hands free operation.
- Universal**
The design permits usage on all profiles of Grease Fittings – SAE, DIN, BS etc
- Robust Construction**
Threaded two piece construction for easy repairs

SPECIFICATIONS

PRESSURE	UPTO 8,000 PSI	UPTO 550 BAR
----------	----------------	--------------



SCAN TO WATCH

ORDERING INFORMATION

CAT NR.	ORD NR.	THREADS
REGULAR		
HC/21/B	43544	1/8" BSPT
HC/21/M	43545	M10 x 1
HC/21/N	43546	1/8" NPT
HC/21/BSP	43547	1/8" BSP
EXTRA LONG		
HC/21L/B	43553	1/8" BSPT
HC/21L/M	43554	M10 x 1
HC/21L/N	43543	1/8" NPT