

Lever Grease Gun High Pressure/High Volume

G200

Patented design: Switch over from High Pressure to High Volume by the slide of a button

Built Tough

- Barrel with 0.049" (1.2mm) wall thickness
- Heavy duty follower spring
- High tolerance CNC machined aluminium die cast head fitted with bulk loader that doubles as an air bleeder
- Non-slip textured powder coated finish for extended working life

Dual Operating Modes

Choose between High Pressure and High Volume setting by the slide of a button

Dual Discharge Ports

Front and top port for convenient greasing on inaccessible fittings

Available in 2 choices

- 6" (150mm) steel extension & coupler
- 12" (300mm) x 0.43" (11 mm) high pressure hose and coupler



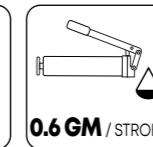
Patented Dual Piston Mechanism

∅
2-1/4"
(57.15 mm)

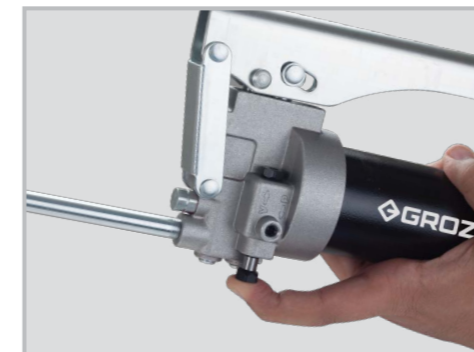
HIGH PRESSURE MODE



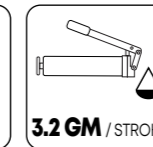
Gun achieves max. working pressure in a few strokes making it useful to open jammed/ clogged fittings in cold weather conditions



HIGH VOLUME MODE



With an **output upto 3X** of a regular Grease Gun, this gun reduces greasing time saving time and cost.



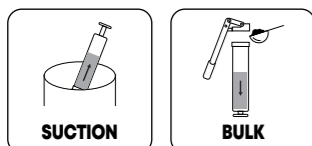
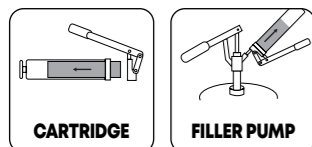
SPECIFICATIONS

HIGH PRESSURE MODE		
DEVELOPS	UPTO 12,000 PSI	UPTO 830 BAR
DELIVERS	UPTO 1 OZ. / 47 STROKES	UPTO 0.6 GM / STROKE

SPECIFICATIONS

HIGH VOLUME MODE		
DELIVERS	UPTO 1 OZ. / 10 STROKES	UPTO 3.2 GM / STROKE
DEVELOPS	UPTO 2,000 PSI	UPTO 130 BAR

FILLING OPTIONS



ORDERING INFORMATION

CAT NR.	ORD NR.	CAT NR.	ORD NR.	THREADS
STEEL EXTENSION & COUPLER		FLEXIBLE HOSE & COUPLER		
G200R/B	42340	G200F-HP/B	42350	1/8" BSPT
G200R/M	42341	G200F-HP/M	42351	M10 x 1
G200R/N	42342	G200F-HP/N	42352	1/8" NPT