

# Blacksmith's/ Cross Pein Hammers

## Indestructible Handle

CPID

### Handle

4 spring steel bars are locked with the hammer head using steel locking plates ensuring that the head never gets dislodged

Ergonomic rubber grip handle absorbs shock & vibration reducing fatigue

### Head

Hammer head is forged from special steel & is induction case hardened to 50-58 HRC for extended life

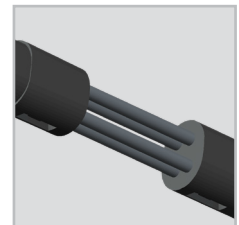
Special bonding process ensures that the handle and head never get loose

### UTILITY

- Heavy Forging
- Bending & Shaping Metal
- Spreading Metal
- Driving Punches & Chisels
- Driving Masonry Drills
- Concrete & Stone Work
- Starting Panel Pins & Tacks

### SPECIFICATIONS

WORKING TEMPERATURE RANGE	-10°C TO 50°C	14°F TO 122°F



4 Spring Steel Bars



### ORDERING INFORMATION

CAT NR.	ORD NR.	HEAD WEIGHT		OVERALL LENGTH		BOX QTY.
		(LBS)	(KG)	(INCH)	(MM)	
CPID/2/16	34530	2.5	1.15	16	400	8
* CPID/3/16	34531	3.5	1.60	16	400	8

\* Best Seller

### WARNING

Do not strike objects harder than 46 HRC. Striking items of a greater hardness is liable to cause fracture or chipping

