

Air / Water Hose Reel

HRP-AW

Compact Design: Fully enclosed design protects inner spring from water & dirt, guaranteeing longer life & trouble free operation.

Compact size allows these to be used in confined spaces with ease

Auto Roll Up: Equipped with slow rewinding mechanism ensuring no one gets hurt

Refined Design: The Top cover discreetly hides the handle. Easily accessible handle makes it convenient to carry

Hose can be locked at any desired position

180° Swivel Wall Bracket: Easily fix the bracket on the wall using screws. The hose reel can swivel 180° on the bracket hence can be adjusted in the desired angle

Easily Replaceable Hose: User can change the hose easily as per its needs/application

Drive spring is manufactured following stringent quality standard covering hardness material size, moment of force etc. ensuring enhanced life.



180° Swivel Wall Bracket Easily Screw The Bracket On The Wall

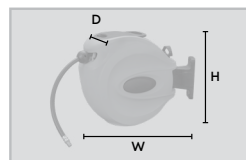


Hose Stopper Adjustable Hose Stopper Allows The User To Pull And Lock The Hose Any Desired Length

SPECIFICATIONS

CASE MATERIAL	Polypropelene	
HOSE LENGTH	15 Meter (50ft.)	
HOSE MATERIAL	Hybride (Nitrile+PVC)	
HOSE I.D.	3/8" 10mm	
INLET /OUTLET THREAD SIZE	1/4" BSPT	
WORKING PRESSURE	15 Bar (217 PSI)	
BURST PRESSURE	15 Bar (580 PSI)	
OPERATING TEMPERATURE	-5°C to 45°C (23°F to 113°F)	

CAT NR.	SIZE (WXDXH)	
	(INCH)	(MM)
HRP/AW/15M/3-8/B	14-7/8 × 7-1/4 × 13-1/4	378 × 185 × 335



SAFETY INFORMATION

- Follow workshop Health & Safety rules, regulations and conditions when using the hose reel.
- During their period of use, accessories must be checked for wear, cracks and other damage, replace any damaged or worn parts.
- Use genuine parts only. Unauthorised parts may be dangerous and will void the warranty.
- Wear approved safety gloves, eye and ear protection.
- Keep the hose reel in good working order for best and safest performance.

WARNING!

- DO NOT use the hose reel for a task it is not designed to perform.
- DO NOT drop, throw or abuse the hose reel.

PACKAGE CONTENT

DESCRIPTION	QUANTITY
Hose reel assembly	1
Swivel Wall Bracket	1
Hardware set	4
O.I.P.M.	1

TOOLS NEEDED

- Drill
- Phillip Screw Driver

BEFORE INSTALLATION

- Do not exceed the maximum working pressure.
- Use only original accessories compliant with the hose reel
- Excess pressure at the outlet can damage the surface and even the hose.
- Water with impurities or dirt will damage the hose reel, so use clean water
- Do not operate the hose reel if any part is missing. Replace the missing part before operating. Failure to do so could result in a malfunction and personal injury

INSTALLATION

(Refer "EXPLODED VIEW")

For a large area, install the hose reel in the center of the work area so as to increase the range of coverage.

The most appropriate position is to mount the hose reel on a wall, placed horizontally about 1 meter off the ground



1. Fasten the Bracket (11) to the desired location on the wall with the screws that included with the product.

2. Remove the connect pin (10), which is already fitted to the hose reel.
3. Position the back of the main case (4) on the Bracket (11), insert the connect pin (10) in such a way that it passes through the back of the main case (4) & Bracket (11).
4. Connect the outlet end of the hose reel with dispensing equipment (air / water nozzle, air blow gun etc.)
5. Connect the compressed air or water source to the inlet hose of the reel. Install a water valve before the hose reel for easy use and maintenance.

OPERATING INSTRUCTION

(Refer "EXPLODED VIEW")

1. Pull the hose (20) of the desirable length in the outward direction. A ratcheting noise can be heard at every revolution of the hose drum (5).
2. When the ratcheting sound is heard, at this position the hose (20) can be locked and will not retract.
3. Now start dispensing the fluid by pressing the trigger of nozzle or gun.
4. After completion of dispensing, pull the hose (20) in the outward direction till it stops making the ratcheting sound, the hose (20) is now unlocked, allow the hose (20) to retract slowly onto the hose drum (5) until the hose stopper (21) rests against the reel mouth

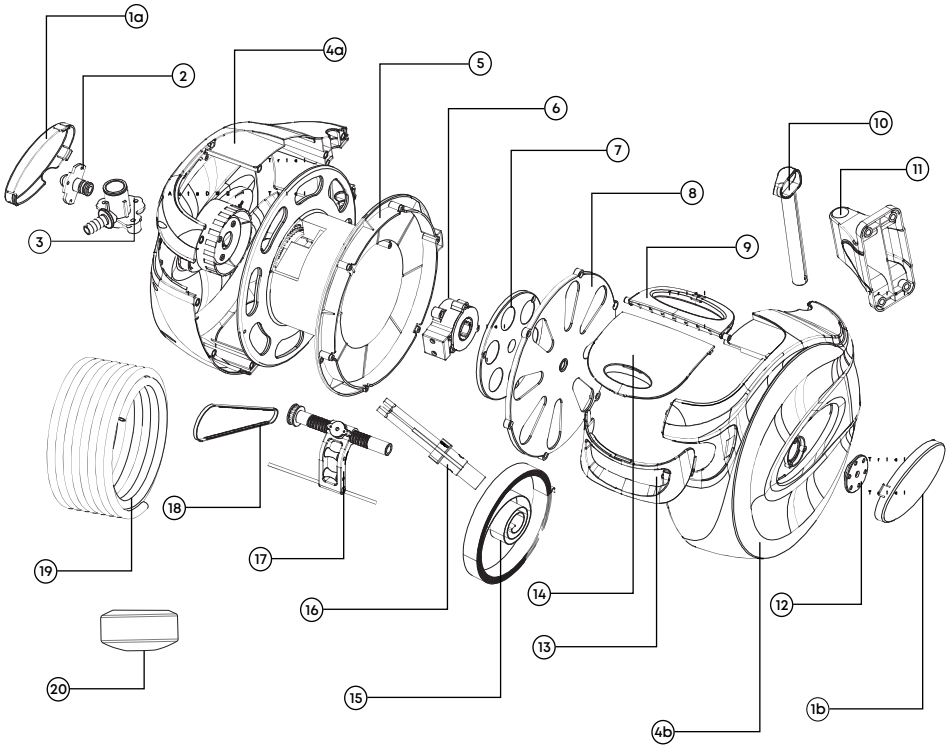
CAUTION!

- To facilitate the return of the hose to the hose reel, always depressurize after use. In some areas where the ambient temperature is high, the sunlight and heat can warm the air hose and cause difficulties for its retraction.
- Do not let the reel exposed to very low temperatures. In this condition the hose may get less flexible, making the retraction more difficult.
- After use, always stop the supply of compressed air or water and depressurize the hose in case of compressed air.
- Avoid leaving water inside the hose if it remains a long time unused.
- Do not clean the reel with chemicals such as acetone, solvents, acids etc. And do not permit contact with this type of material, as they may damage the equipment.

MAINTENANCE

- Hose reel should be kept clean and checked for damage before each use.
- Hose reel does not have any built in filter, it is therefore important that the fluid flowing through it should be clean. Make sure that the pump has a filter at its inlet.
- If due to any reason, the hose reel fails to function, return the product to the place of purchase for replacement; if within the warranty period.

EXPLODED VIEW



PART LIST

REF NO.	PARTS DESCRIPTION	QUANTITY
1	Side Cover	
a	Left	1
b	Right	1
2	Inlet Hose Connector	1
3	Outlet Hose Connector	1
4	Main Case	
a	Left	1
b	Right	1
5	Hose Drum	1
6	Stop Lock	1
7	Inner Cover	1
8	Spring Room Cover	1

REF NO.	PARTS DESCRIPTION	QUANTITY.
9	Connect Pin	1
10	Connect Pin	1
11	Bracket	1
12	Tension Cover	1
13	Front Cover	1
14	Up Cover	1
15	Spring	1
16	Center Shaft	1
17	Hose Guide	1
18	Belt	1
19	Hose	1
20	Hose Stopper	1



TROUBLESHOOTING

PROBLEM	POSSIBLE CAUSE	CORRECTIVE ACTION
Fluid leakage	Loose connection	Check all the threaded connection and use Teflon tape to make them leak proof.
Hose will not retract	Hose bunching.	Pull hose out and rewind guiding the hose to avoid bunching.
Reel will not latch	The hose has been pulled past the latching teeth.	Allow the reel to slowly retract after hearing the click.
Little or no discharge	Blocked hose	Remove the hose and then operate the trigger, if there is appropriate discharge then hose is blocked. Now clean the hose or change it.

DISPOSAL

The components or the used products must be given to companies that specialize in the disposal and recycling of industrial waste.

GROZ WARRANTY POLICY

Groz makes all efforts to ensure that its products meet the highest standards of quality and durability and warrants to the original purchaser its range of products for a period of 12 months from Groz Invoice date, against defects in materials and workmanship. If the Groz product is part of a set, only the portion that is defective is subject to this warranty.

This warranty does not apply to damage due directly or indirectly, to misuse, abuse, wear and tear, negligence or accident, repairs or alterations outside Groz plants, or to lack of maintenance. Groz shall in no event be liable for death, injuries to persons or property or for incidental, contingent, special or consequential damages arising from the use of its products. It is upto the user to determine suitability and safety of the product for their intended use, and the user assumes all risks and liability herewith.

In no event, shall Groz's liability exceed the invoiced cost of the product. In case of identification of defect covered under this warranty, the same must be notified in writing to Groz /Groz designated authorized service location. Proof of purchase date must accompany the complaint. Groz reserves the right to call back the faulty unit, all charges including transportation prepaid. On verification of the defect, the unit will be repaired or replaced with a new or reconditioned product or part of equal utility or a full refund given at Groz's discretion. The repaired /replaced units will be returned to the user freight prepaid, using most economical freight carrier. However if determined that the defect resulted from causes not within the scope of the warranty, then the cost of returning the product would be to buyer's account.

Groz Engineering Tools (P) Ltd. Groz Net Industries

Village Kherki Daula, National Highway-8,
Gurugram-122001, Haryana, INDIA
Tel +91.124.282.7734/40, 2827777
Fax +91.124.2827980, 2827986
E-Mail info@groz-tools.com
Url www.groz-tools.com

The GROZ name, GROZ logo and the  mark are trademarks of GROZ Engineering Tools (P) Ltd., India